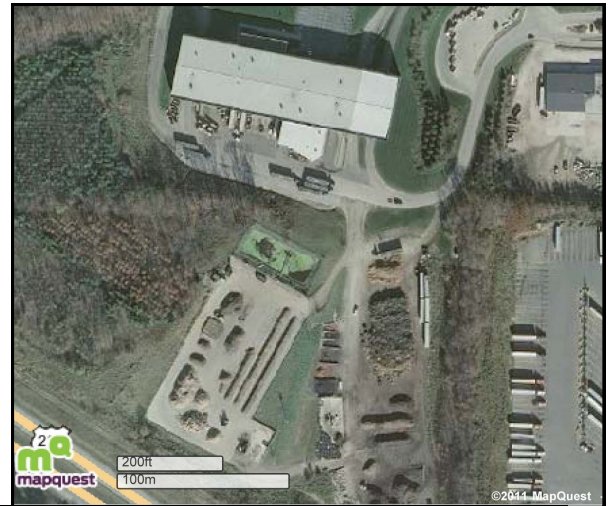




Composting in Ohio 2011: A tour of the industry

August 11, 2011

An aerial view of the **Medina County MSW Processing Complex**. All solid waste in the county enters this site and are recyclables are separated at the Central Processing Facility (CPF) using mechanical methods and human workers.



The Class I composting facility process 100,000 lbs/day of 2-inch or smaller material is from the CPF. Although glass and some plastic remain, the compost is used as an alternative daily cover at 3 landfills.



At the Class IV facility, steam rises from large windrows of composting yard wastes.



At **Baldwin Wallace College**, food scraps from the largest dining facility are composted in a 3-cubic-yard capacity Earth Tub.



Tour participants share ideas for preventing freezing of the compost during the college's winter break.



At **Rosby's Resource Recycling** participants check out the compost, which is sold in bulk at the garden center or used in topsoil blends.

This Class II facility composts food scraps from the Cleveland area, including grocery stores, a college, a hospital, and restaurants. Three 20-yard capacity trucks are used to collect food scraps 4 days a week.



The Rosby's sent tour participants home with fresh raspberries from their 16-acre berry farm!

Thank you to our tour hosts:

Medina County Municipal Solid Waste Processing Complex
<http://www.recyclemedinacounty.com/index.html#>

Baldwin Wallace College
<http://www.zerowasteneo.org/profiles/blogs/baldwinwallace-food-waste>

Rosby Resource Recycling
<http://rosbycompanies.com/resourcerecycling.htm>

Additional Resources:

Ohio Composting and Manure Management (OCAMM) Program: <http://oardc.osu.edu/ocamm>
To join the free listserv, send an e-mail to wicks.14@osu.edu

Organic Recycling Association of Ohio (ORAQ): <http://www.ohiocompost.org/>

Ohio Environmental Protection Agency, Composting Program:
<http://www.epa.ohio.gov/dsiwm/pages/compstpro.aspx>

US Composting Council:
<http://www.compostingcouncil.org/>

